

# SITELINE

*ANPLighting* Collection



lightfair  
innovation  
awards

2022

**Category Winner**

*Parking, Roadway and Area Luminaires*

Pedestrian & Site Lighting





# SiteLine Collection

SiteLine by ANP Lighting combines design, visual comfort & technology, to provide a distinctively versatile lighting solution.

ANP's design and engineering team balance form, function and versatility with visual experience, performance and technology to create an unparalleled luminaire collection.

The SiteLine Collection establishes best in class design with industry leading technology, complementing an impressive variety of architectural styles.

SiteLine is the 2022 LightFair Innovation Award category winner for parking, roadway and area luminaires.



LUMINAIRES - TWO SIZES + MULTIPLE MOUNTING OPTIONS



WALL MOUNTS - TWO SIZES



BOLLARD - ONE SIZE





## SiteLine Luminaires

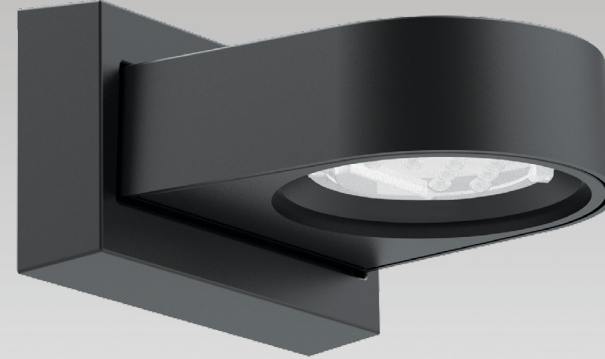
Variety of mounting & performance options available.

Available in two sizes, SiteLine post top luminaires are designed with a patent-pending clamping mechanism that allows multiple fixtures to be mounted at any height or point in a 360° radius on a single pole with no visible hardware.

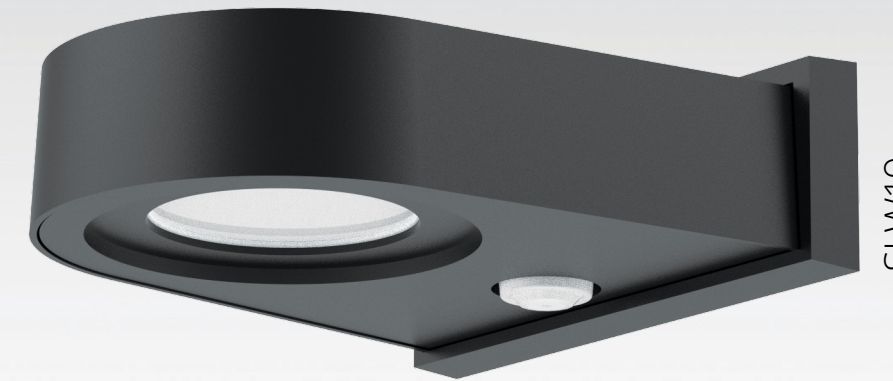
- Comfort and performance are taken to the next level through ANP Lighting's edge-lit, LED Light Guide that delivers uniform illumination and superior optical control, while significantly reducing glare and eliminating pixelation of the LED source.
- The day form appearance of the luminaire is further enhanced by the use of the edge-lit LED Light Guide technology, providing a clean and minimalist appearance when the fixture is off.
- ANP's performance TIR optic platform engine offers a wide selection of lumen packages, color temperatures and light distribution types with strict cutoffs.
- Type II, III, IV, and V distribution patterns in 2700K, 3000K, 3500K, and 4000K CCT.
- Standard Surge Protection Device featuring 20KA maximum discharge current meets IEEE C62.41.2 Category C High and ANSI C136.2-2015 standards.
- Flush-mounted integral high-low digital PIR motion sensor available offering bi-level dimming, utilizing 0-10V signal. The sensor is capable of dimming lighting loads down to 50%, 25%, 10% or OFF.
- 39W California Title 24 Wattage packages available.



SLW09



SLW19



## SiteLine Wall Mounts

Versatility in mounting.

Available in two sizes, SiteLine wall mount luminaires provide an elegant and minimalist appearance, adding to the versatility of the SiteLine Collection.

- Standard surge protection features 20KA maximum discharge.
- SLW09 available with 12 LED Array. (Type I, II, III and V)
- SLW19 available with performance TIR optics or low-glare, edge-lit comfort LED Panels. (Type II, III, IV and V)
- 2700K, 3000K, 3500K, 4000K CCT.
- SLW19 shown with optional occupancy sensor.
- SLW09 has optional button photocell.





## SiteLine Bollard

The ideal companion.

Complementing the SiteLine family, the SiteLine bollard is the ideal companion product and offers a robust set of features.

- Available with 12 LED Array.
- Type I, II, III, and V optical distribution patterns.
- 2700K, 3000K, 3500K, 4000K CCT.
- Standard Surge Protection Device featuring 20KA maximum discharge current meets IEEE C62.41.2 Category C High and ANSI C136.2-2015 standards.
- Available internal high-low microwave motion sensor.



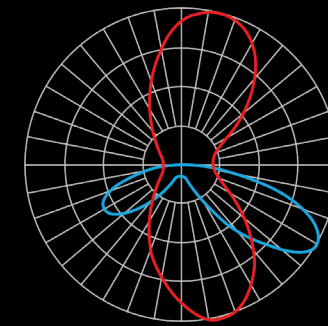


# Unmatched Comfort & Performance

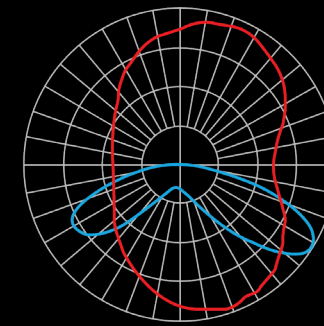
Edge-lit LED Light Guide is available in ANP Lighting's SiteLine Collection. LED Light Guide technology significantly reduces glare and eliminates pixelation of the LED source. Uniform illumination and superior optical control, along with a wide selection lumen packages, light distribution types and color temperatures, takes visual comfort and performance to the next level.

<b>IP66</b> LIGHT ENGINE CONSTRUCTION	<b>0</b> PIXELATION OF LED SOURCE	<b>IK08</b> IMPACT RATING	<b>20KA</b> SURGE PROTECTION STANDARD	<b>0-10V</b> DIMMING 0-10V (DOWN TO 10%)
---	---	---------------------------------	---	---

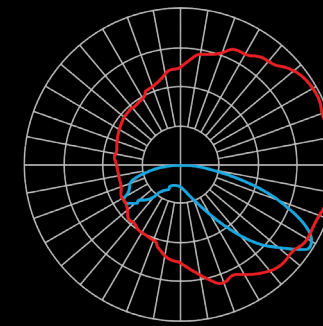
- Available distribution patterns Type II, III, IV and V
- 2700K, 3000K, 3500K and 4000K
- 3-Step binning
- > 70 CRI
- UL listed



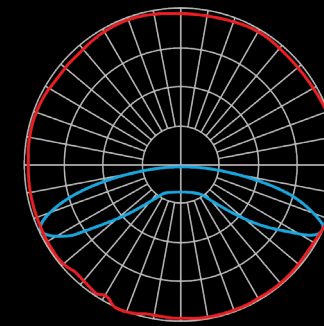
Type II



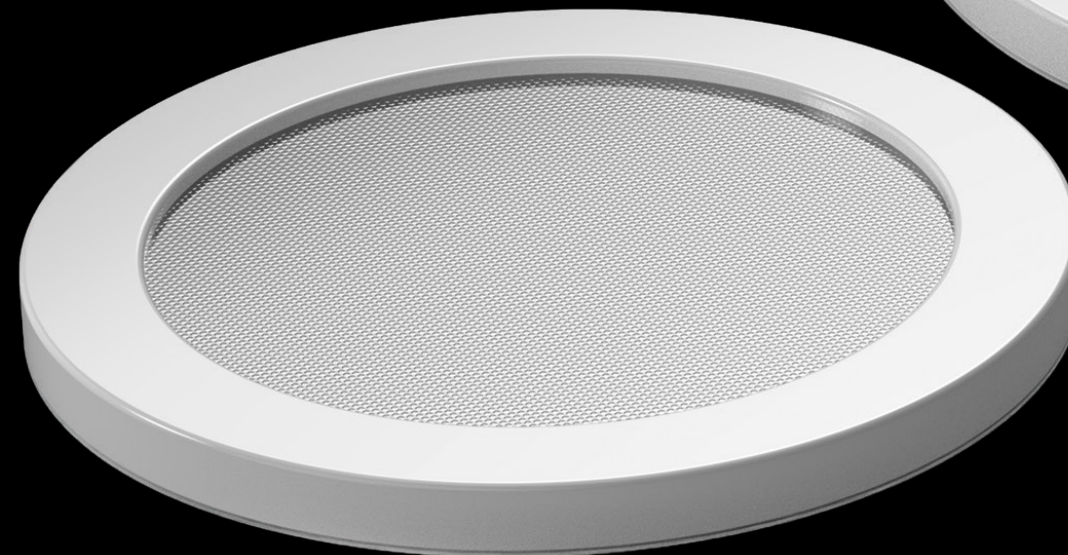
Type III



Type IV



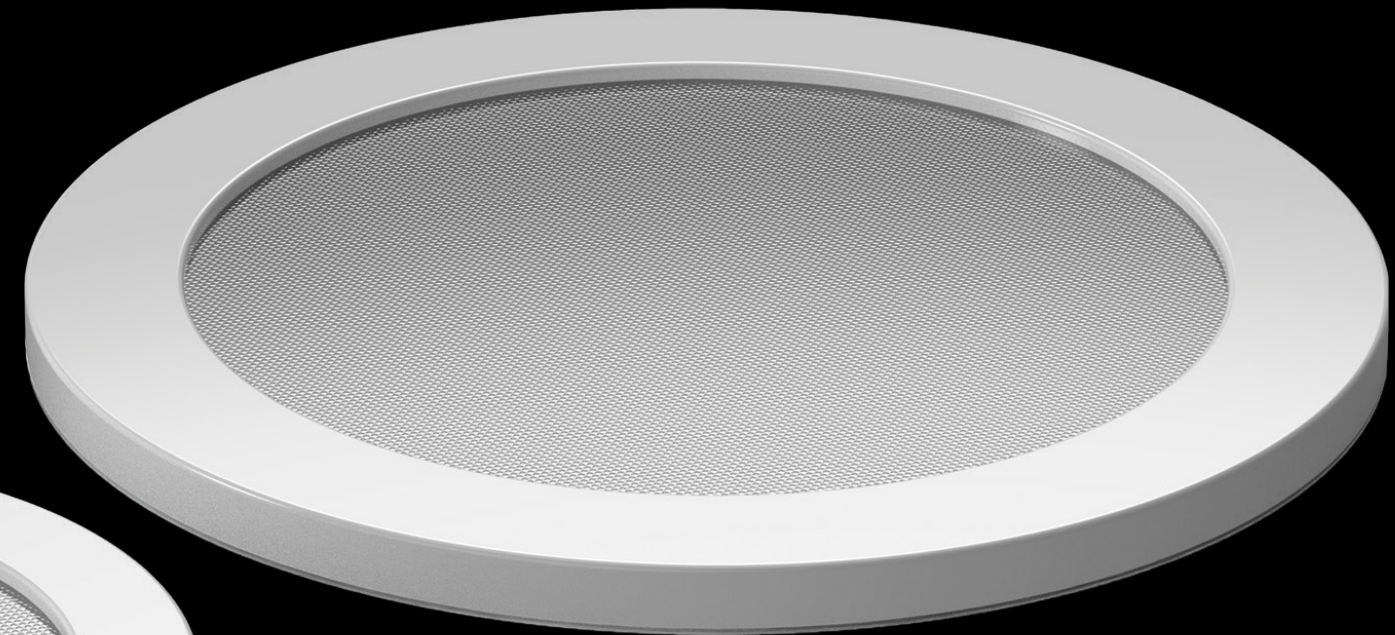
Type V



8.5"

30W | 39W  
50W | 65W | 80W

Up to 9,986 delivered lumens  
Up to 126 lumens per Watt



12"

60W | 75W  
80W | 90W | 105W

Up to 14,122 delivered lumens  
Up to 135 lumens per Watt



# High Lumen Package Delivers Superior Efficiency

Featuring ceramic heat sink technology and individual LED optical control, based on high performance TIR Optics, the ANP Ceramic Platform engine offers superior performance and efficiency. A wide selection of lumen packages, color temperatures and light distribution types are available. It's lightweight and easy to upgrade. The ANP Ceramic Platform engine integrates seamlessly to each fixture.

**IP66**

LIGHT ENGINE  
CONSTRUCTION

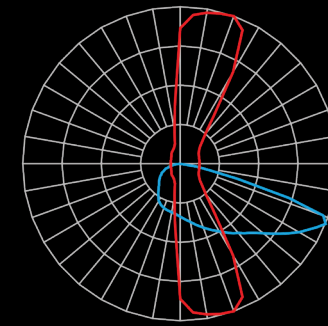
**20KA**

SURGE PROTECTION  
STANDARD

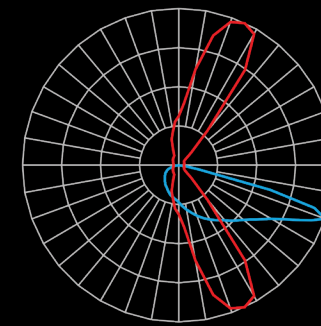
**0-10V**

DIMMING  
0-10V  
(DOWN TO 10%)

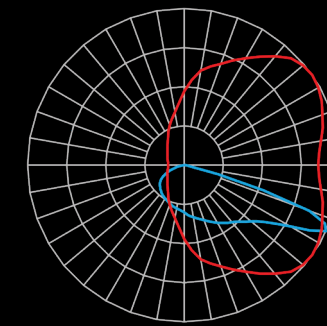
- Available distribution patterns Type II, III, IV and V
- 2700K, 3000K, 3500K and 4000K
- > 70 CRI
- ETL listed



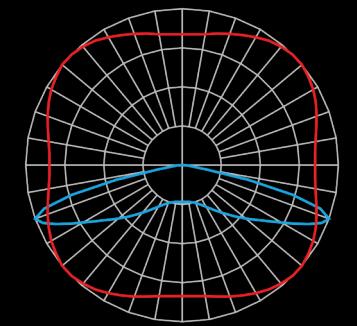
Type II



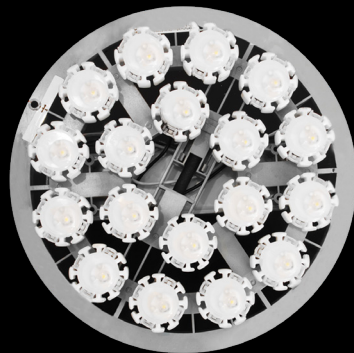
Type III



Type IV



Type V



**30 Watt**

4,265 to 4,796 lumens  
Up to 160 lumens per Watt



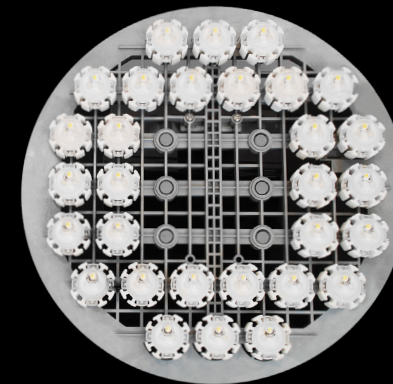
**39 Watt**

5,539 to 6,142 lumens  
Up to 160 lumens per Watt



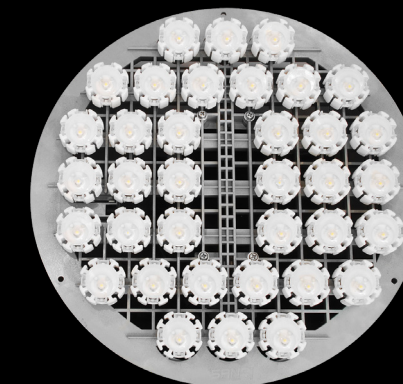
**46 Watt**

6,533 to 7,244 lumens  
Up to 160 lumens per Watt



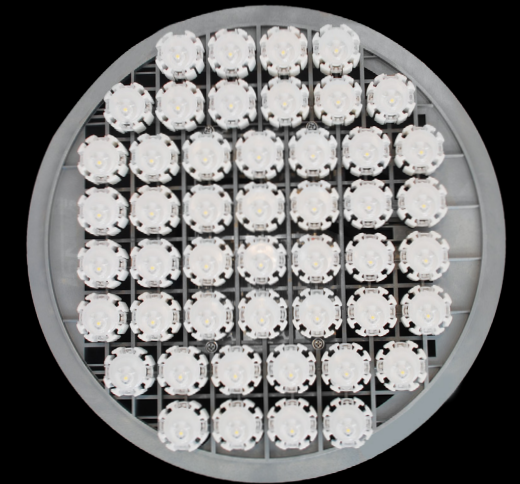
**78 Watt**

10,563 to 12,005 lumens  
Up to 154 lumens per Watt



**90 Watt**

12,590 to 14,309 lumens  
Up to 154 lumens per Watt



**120 Watt**

16,211 to 19,191 lumens  
Up to 158 lumens per Watt



# Small Light Engine with Big Performance

ANP Lighting's 12 LED Array engine is utilized in smaller fixtures where performance driven optics are required. When paired with a high transmission acrylic lens, a soft optic solution is the result. The 12 LED Array scales down the size but not the performance. The light engine offers three different lumen packages, with a variety of color temperatures and light distribution types.

**IP66**

LIGHT ENGINE  
CONSTRUCTION

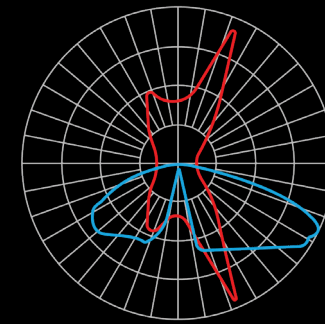
**20KA**

SURGE PROTECTION  
STANDARD

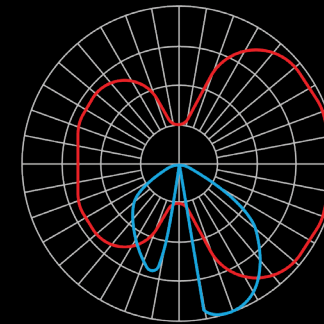
**3X**

DIMMING  
0-10V/TRIAC/ELV  
(DOWN TO 10%)

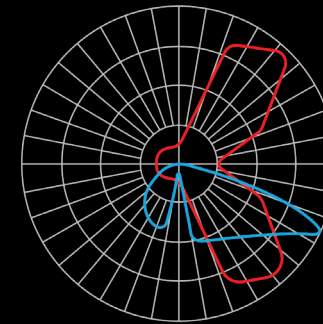
- Available distribution patterns Type I, II, III, and V
- 2700K, 3000K, 3500K and 4000K
- 70-80 CRI
- 3-Step Binning



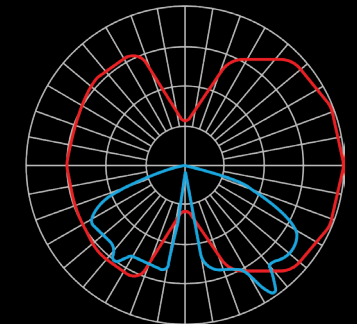
Type II



Type III



Type IV



Type V



4 1/4" in diameter

**10 Watt**

945 to 1,199 lumens  
Up to 120 lumens per Watt

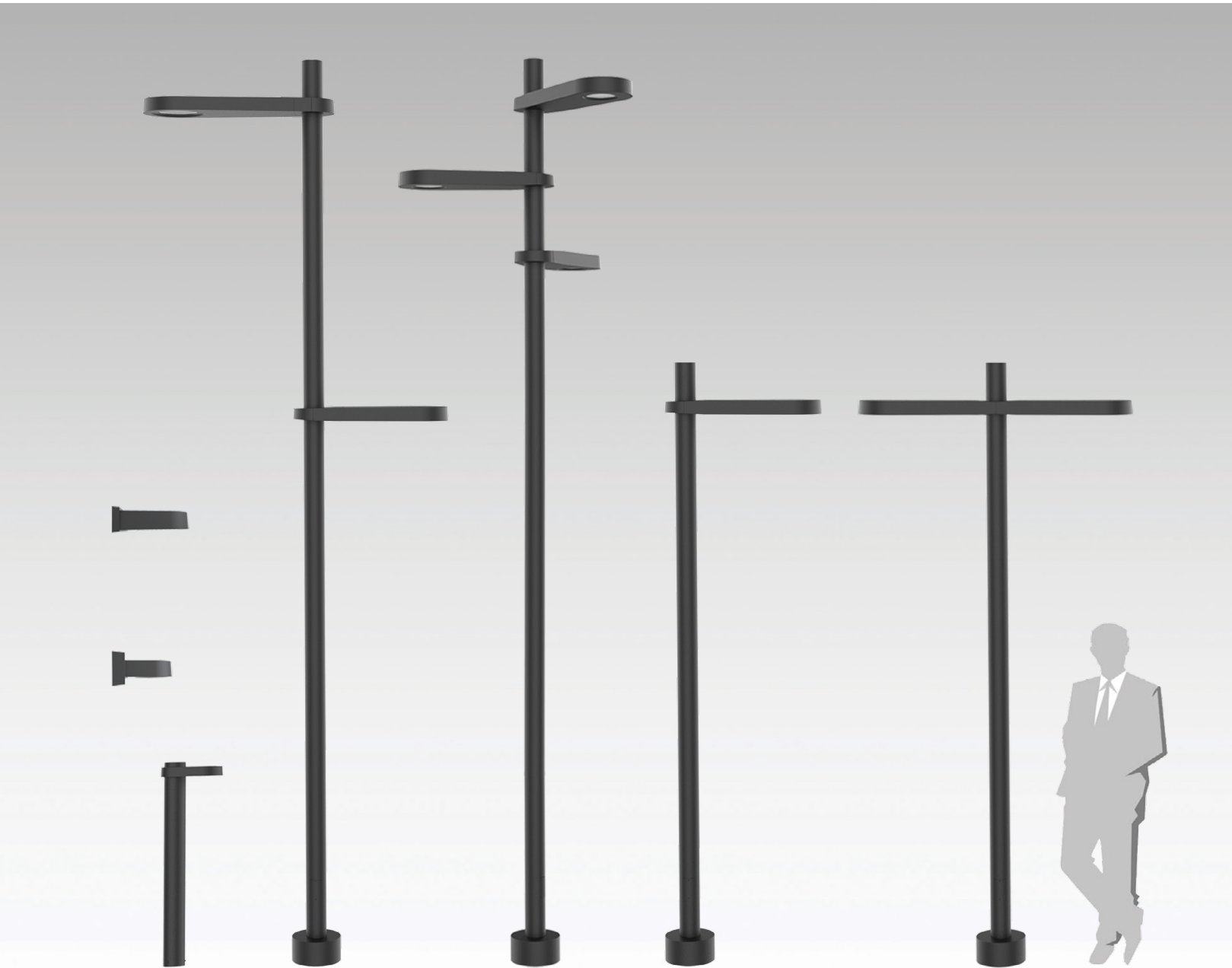
**18 Watt**

1,701 to 2,158 lumens  
Up to 120 lumens per Watt

**32 Watt**

3,024 to 3,837 lumens  
Up to 120 lumens per Watt





## Family & Scale

### Multiple Mounting Options & Variations

SiteLine by ANP Lighting includes two sizes of post top luminaires, a companion bollard and two sizes of wall mounts. SiteLine post-top luminaires are designed with a patent-pending clamping mechanism that allows multiple fixtures to be mounted at any height or point in a 360° radius on a single pole with no visible hardware. The luminaires are available with TIR optics or low-glare edge-lit LED panels.

## Control Solutions



### Fixture Mount High-Low Motion Sensor/Photocell

This sensor uses digital PIR Motion Detector Architecture and Quad Element passive infrared (PIR) technology for improved detection, 360° coverage is suitable for outdoor use at mounting heights up to 40 ft. Designed to satisfy CA Title 24 requirements for bi-level dimming of lighting fixtures, utilizing 0-10V signal, the sensor is capable of dimming lighting loads down to 50%, 25%, 10% or OFF.



### External Mount High-Low Motion Sensor/Photocell

The outdoor rated sensor utilizes 100% digital passive infrared (PIR) technology into a line powered motion sensor. Mounts directly to a pole, post arm, or wall mount.



### Twist Lock Receptacle

Ideal for outdoor commercial and utility lighting. ANSI C136.41 receptacles provide the flexibility to add photo control sensors to a luminaire. Additionally, receptacles are available with 2 or 4 dimming contacts to support either 0-10 VDC dimming methods or Digital Addressable Lighting Interface (DALI), providing reliable power interconnect with 3 robust twist lock contacts. Available in 5-Pin or 7-Pin connectivity solutions.

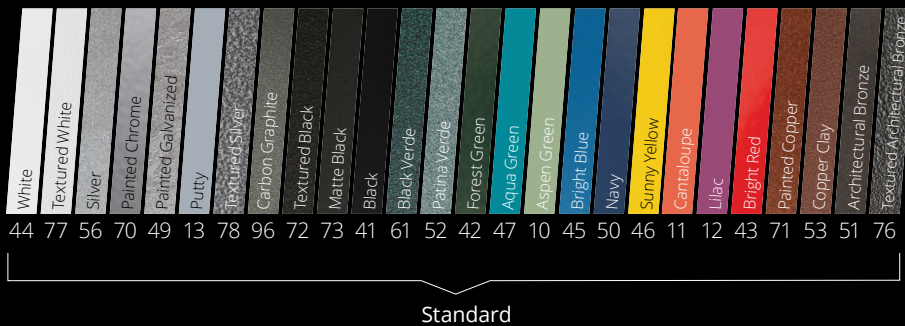
Since 1985, ANP Lighting has been inspiring and empowering innovative lighting solutions.

Today, ANP Lighting is a leading manufacturer of energy efficient architectural lighting solutions for corporate/office, municipal, education, sports and entertainment, hospitality, and retail applications. We expertly configure and manufacture interior, exterior, site, pedestrian, and roadway lighting that aligns with aesthetic vision and beautifully illuminates design details.

Our extensive line of lighting products and collections is complemented by a wide array of mounting, size, and color options – one of the largest selections in the industry. Our in-house lighting experts can help architects, designers, and specifiers develop lighting solutions with the high quality, craftsmanship, and value only products made in the U.S.A. can deliver.

## Finishes

Visit [ANPlighting.com/resources/color-finishes](http://ANPlighting.com/resources/color-finishes) for more details. Custom finishes available.



Marine grade finishes are available. Colors shown may differ slightly from painted color.



Made in U.S.A. | A family owned business

Contact Us: 800-548-3227 | 909-982-1807  
[ANPlighting.com](http://ANPlighting.com)

9044 Del Mar Avenue, Montclair, CA 91763

