

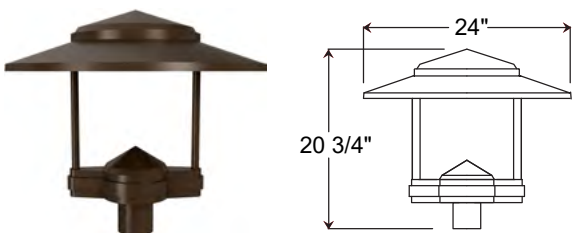


Project Name: _____

Fixture Type: _____ Quantity: _____

Customer: _____

Specifications



Material:
Durable A356 cast aluminum and aluminum sheet metal. Hardware is stainless steel or zinc-plated steel.

Fixture Mounting:
Post Mount: Post Cap with set screws.

Drivers:
Universal Voltage 120-277V is standard. 0-10V dimming is standard. (Refer to Driver Specification section for other specifications.)

Dark Sky Friendly:
To maintain dark sky friendly compatibility: ≤ 3000K

Electrical:
A lightning surge protective device is standard (20KA³ Max/10KA² Nominal). Approximately 12" of pull wire extends from luminaire. All luminaires are prewired with 0-10V dimming leads. Post Arms and Wall Mounts are also prewired with line voltage & dimming leads.

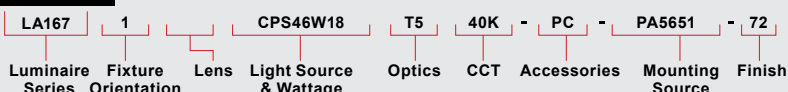
Finish:
A polyester powder coat high quality finish. Marine grade finish is available.

Certifications:
UL Listed for outdoor, wet location. LED is IP66.

Modifications:
Consult factory for custom or modified designs.

Buy American:
This product is assembled in the USA and meets the Buy America(n) government procurement requirements under FAR, DFARS, and DOT regulations. [Click here for additional information.](#)

Catalog Logic



LA167 LED

EPA: 0.82
Weight: 26 lbs.

Catalog Number	1	2	3	4	5	6	7	8
LA167	1							

1	FIXTURE ORIENTATION
1 (Post)	

2	LIGHT SOURCE & WATTAGES
TIR Performance Platform	
CPS30W18 (30W TIR Performance Platform)	
CPS39W18 (39W TIR Performance Platform, CA Title 24)	
CPS46W18 (46W TIR Performance Platform)	

3	OPTICS
T2 (Type II)	
T3 (Type III)	
T4 (Type IV)	
T5 (Type V)	

4	CCT (COLOR TEMPERATURE)
27K (2700K)	
30K (3000K)	
35K (3500K)	
40K (4000K)	
*Consult Factory for 5000K	

5	ACCESSORIES
HSS90 (90° House Side Shield)	
HSS120 (120° House Side Shield)	
*EMG-LED10 (10W LED Emergency Driver, See Below For Compatibility)	
*EMG-LED20 (20W LED Emergency Driver, See Below For Compatibility)	
HLMSPC-06 (On/Off Motion Sensor/Photocell, High/Low field-configurable; 15' - 30' Sensor Mounting Height)	
HLMSPC-10 (On/Off Motion Sensor/Photocell, High/Low field-configurable; 8' - 15' Sensor Mounting Height)	
PC (Button Photo Cell)	
TLPC (ANSI C136.41 Twist Lock Photocell, includes receptacle and 120-277V photo cell)	
TL5 (ANSI C136.41 5-Pin Twist Lock Receptacle only)	
TL7 (ANSI C136.41 7-Pin Twist Lock Receptacle only)	
AD (AstroDIM™ - Night-time dimming, consult factory)	
FAID (Field Adjustable Internal Dimmer)	
*Most Emergency Drivers are remote mount only (consult factory). 10W & 30W Emergency Drivers are not compatible with all LED Light Source and Wattages. For percent lumens in emergency mode, see Technical Section	

6	MOUNTING SOURCE	
Post Mount Options		
S3 (Slips over Ø3" pole or tenon)	PA3111	WM4511
S4 (Slips over Ø4" pole or tenon)	PA3113	WM4513
S5 (Slips over Ø5" pole or tenon)	PA5151	WM5133
TN3 (Mounts to Ø3" pole with Ø2-3/8" x 4" tenon)	PA5153	WM5161
TN4 (Mounts to Ø4" pole with Ø2-3/8" x 4" tenon)	PA5411	WM5163
TN5 (Mounts to Ø5" pole with Ø2-3/8" x 4" tenon)	PA5413	WM5601
OM (Other Mounting, Please Specify)	PA8521	WM5603
All Poles		All Post Mounts
All Wall Mounts		
Column Mount		
CM Column Mount		
See last page for popular mounting sizes/styles.		

7	FINISHES					
*Premium and Marine Grade Finish have additional charges						
Standard Colors	Standard Grade	Marine Grade*	Standard Colors	Standard Grade	Marine Grade*	Marine Grade*
Aspen Green	10	10M	Copper Clay	53	53M	
Cantaloupe	11	11M	Silver	56	56M	
Lilac	12	12M	Black Verde	61	61M	
Putty	13	13M	Painted Chrome	70	70M	
Raw Unfinished	40	NA	Painted Copper	71	71M	
Black	41	41M	Textured Black	72	72M	
Forest Green	42	42M	Matte Black	73	73M	
Bright Red	43	43M	Textured Architectural Bronze	76	76M	
White	44	44M	Textured White	77	77M	
Bright Blue	45	45M	Textured Silver	78	78M	
Sunny Yellow	46	46M	PREMIUM FINISH	Premium Grade*	Marine Grade*	
Aqua Green	47	47M	Textured Desert	80	80M	
Galvanized	49	NA	Graystone	82	82M	
Navy	50	50M	Oil Rubbed Bronze	83	83M	
Architectural Bronze	51	51M	Carbon Graphite	96	96M	
Patina Verde	52	52M				

Consult Factory for additional paint charges and availability.

Project Name: _____

Fixture Type: _____ Quantity: _____

Customer: _____

PERFORMANCE TABLE - TIR PLATFORM - DELIVERED LUMENS

LED CATALOG	WATTS	DISTRIBUTION	2700K				3000K				3500K				4000K							
			DELIVERED LUMENS	lm/W	B	U	G	DELIVERED LUMENS	lm/W	B	U	G	DELIVERED LUMENS	lm/W	B	U	G	DELIVERED LUMENS	lm/W	B	U	G
CPS30W18	30W	TYPE II	3080	103	1	0	1	3322	111	1	0	1	3344	111	1	0	1	3454	115	1	0	1
		TYPE III	3056	102	1	0	1	3296	110	1	0	1	3318	111	1	0	1	3427	114	1	0	1
		TYPE IV	3283	109	1	0	1	3541	118	1	0	1	3565	119	1	0	1	3682	123	1	0	1
		TYPE V	3330	111	2	0	1	3592	120	2	0	1	3616	121	2	0	1	3735	124	2	0	1
CPS39W18	39W	TYPE II	4004	103	1	0	1	4319	111	1	0	1	4348	111	1	0	1	4491	115	1	0	1
		TYPE III	3972	102	1	0	1	4284	110	1	0	1	4313	111	1	0	1	4455	114	1	0	1
		TYPE IV	4268	109	1	0	1	4603	118	1	0	1	4634	119	1	0	1	4786	123	1	0	1
		TYPE V	4329	111	3	0	1	4669	120	3	0	1	4700	121	3	0	1	4855	124	3	0	1
CPS46W18	46W	TYPE II	4723	103	1	0	1	5094	111	1	0	1	5128	111	1	0	1	5297	115	1	0	1
		TYPE III	4685	102	1	0	1	5054	110	1	0	1	5087	111	1	0	1	5254	114	1	0	1
		TYPE IV	5034	109	1	0	1	5430	118	1	0	1	5466	119	1	0	1	5645	123	1	0	1
		TYPE V	5106	111	3	0	1	5507	120	3	0	1	5544	121	3	0	1	5726	124	3	0	1

TIR PERFORMANCE PLATFORM SPECIFICATION

- Performance, Ceramic-cooling technology
- Distributions: Type II, III, IV, V
- CCT: 2700K, 3000K, 3500K, 4000K
- Life: L70 >50,000 hours
- Ingress Protection: IP66
- Certification: ETL
- CRI: >80, 3 SDCM

DRIVER SPECIFICATION

- Universal Input 120-277V
- 0-10V Dimming to 10%
- Power Factor @ Full Load >95%
- THD @ Full Load <10%
- Constant Current Output 50/60Hz
- Operating Temperature: -40°C Minimum
- Ingress Protection: IP66
- Certifications: UL Recognized, CSA, RoHS

FINISHES

- A polyester powder coat high quality finish is electro-statically applied and baked at 430° for exceptional durability and color retention. Products undergo an intensive five-step cleansing and pretreatment process for maximum paint adhesion. 5-year warranty for aluminum products. 2-year warranty for steel products.
- Marine grade finish provides superior salt, humidity and UV protection. This coating withstands up to 3,000 hours of continuous salt spray and is available in either a textured or gloss surface. 5-year warranty for aluminum products. 2-year warranty for steel products.

WARRANTY

See www.ANPlighting.com for complete fixture warranty.

LED warranty information

- 5 year limited warranty*
- *Limited Warranty: A typical year is defined as 4,380 hours of operation.

ACCESSORIES



HSS90 & HSS120



EMG-LED10, 20



HLMSPC-06 & HLMSPC-10 PC



TLPC



TL5 & TL7



FAID

Project Name: _____

Fixture Type: _____ Quantity: _____

Customer: _____

POPULAR POST MOUNTS

See Post Arm Section on Website for Specification Sheets and additional post arms. Dimensions are Projection x Height.
[Click here for all Post Mount styles](#)



PA3321 / 18" x 14 3/4"



PA5151 / 14 1/4" x 19 3/4"



PA5411 / 17 7/8" x 25 1/8"



PA5611 / 18 5/8" x 26 1/2"



PA5621 / 19" x 26 1/4"



PA5651 / 20" x 26 1/4"



PA6211 / 22 3/4" x 26 1/2"



PA6311 / 17" x 23 1/4"



PA7911 / 20" x 20 5/8"



PA8031 / 20 1/2" x 20 1/4"



PA8521 / 18 1/4" x 14 1/2"



PA8571 / 24" x 47"

POPULAR WALL MOUNTS

See Wall Mount Section on Website for Specification Sheets and additional wall mount arms. Dimensions are Projections x Height.
[Click here for all Wall Mount styles](#)



WM2141 / 18" x 12 3/16"



WM2211 / 15 1/2" x 15 7/8"



WM3001 / 11" x 8 7/8"



WM3351 / 14 1/2" x 17"



WM4511 / 17" x 8"



WM5131 / 11" x 16 3/8"



WM5161 / 15 3/4" x 17 3/4"



WM5311 / 10 7/8" x 10"



WM5601 / 17 7/8" x 14"



WM5611 / 17 5/8" x 22"



WM7421 / 16 3/8" x 15 3/4"



WM8021 / 19 1/4" x 16 3/8"

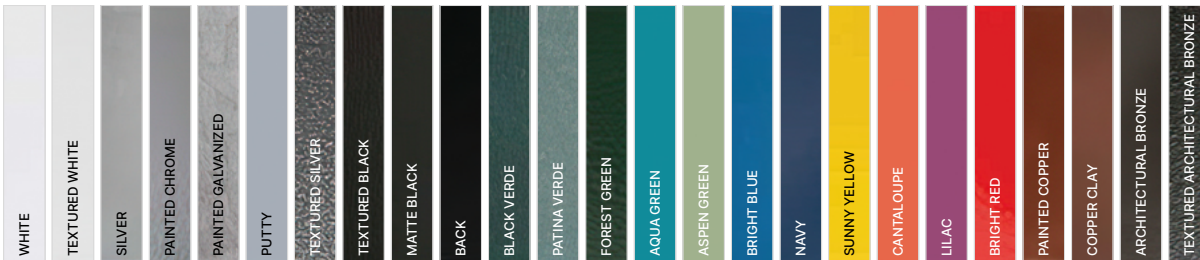
COLUMN MOUNT



CM / 5 3/4" SQ x 3 1/2" H

FINISHES COLORS

STANDARD



PREMIUM

