



VEC20

Weight: 4 lbs

200w Max

Medium Base

Catalog Number

VEC20

1 LIGHT SOURCE & WATTAGES	
GU24	(GU24 Socket)
MB	(Medium Base Socket, 200w Max)

2 MOUNTING SOURCES*	
Arm Mounts (Cast back plate included)	
E3 E4 E6 E8 E9 E10 E11 E12 E18 E25	Wall Mounts
WM35 WM55 WM318	Post Mounts
PM10 PM20 PM30 PM40 PM50 PM319	Cord Mounts** (Includes 1" x 5 3/8" canopy) (See page 3 for color cord style)

SJT Cord	
BLC (6' Black SJT Cord)	WHC (6' White SJT Cord)
Solid Fabric Colored Cords	
BLSF (6' Black)	ORSF (6' Orange)
GYSF (6' Gray)	LGSF (6' Lime Green)
CHSF (6' Chocolate Brown)	KGSF (6' Kelly Green)
WHSF (6' White)	CBSF (6' Cobalt Blue)
CASF (6' Cardinal)	SBSF (6' Sky Blue)

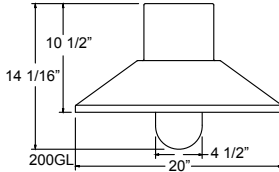
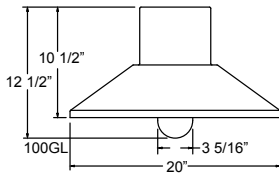
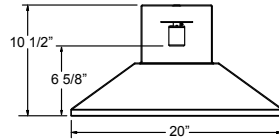
Patterned Fabric Colored Cords	
BWHPF (6' Black/White Houndstooth)	BIHPF (6' Brown/Ivory Houndstooth)
GYCPF (6' Gray/Citrus Yellow)	MOSPF (6' Magenta/Orange Stripe)
NMTPF (6' Navy Mini Tweed)	

Glossy Fabric Colored Cords	
GMGF (6' Gun Metal)	SSGF (6' Sterling Silver)
CPGF (6' Copper Penny)	BRGF (6' Bronze)
GOGF (6' Gold)	

Cable Mounts** (Includes 1" x 5 3/8" canopy)	
SSC-BLC	(Stainless steel cable with 6' Black SJT Cord)
SSC-WHC	(Stainless steel cable with 6' White SJT Cord)
SSC-XXXX	(Stainless steel cable with 6' Color cord. Replace XXXX with color cord designation above)

Stem Mounts (Includes STC Flat Canopy)	
1/2" (13/16" OD) Rigid	3/4" (1" OD) Rigid Stems
2ST6 2ST12 2ST18	3ST6 3ST12 3ST18
2ST24 2ST36 2ST48	3ST24 3ST36 3ST48
2ST60 2ST72 2ST96	3ST60 3ST72 3ST96

*Arm mount, Wall mount or Stem finish will match fixture finish.



Project: _____
 Fixture Type: _____ Quantity: _____
 Customer: _____

Specifications

Material:
 RLM shades are constructed of heavy duty spun aluminum. Wall back plate and ballast housing are cast aluminum. All fasteners are stainless steel. Inside of shade is reflective white finish for all colors except galvanized paint finish. Screw hardware may not match paint.

Glass:
 Choice of clear, frosted or prismatic glass.

Electrical:
 Medium Base Socket, 200w Maximum or GU24 Socket.
 Approximately 12" of pull wire extends from fixture. Additional pull wire provided for post mount arms and wall mounts.

Certifications:
 Cord mounts are UL Listed for dry locations. Arm mount, stem mount and wall mount are UL Listed for wet locations.

Catalog Logic



Finish:
 A polyester powder coat high quality finish is electro-statically applied and baked at 430° for exceptional durability and color retention. Products undergo an intensive five-step cleansing and pretreatment process for maximum paint adhesion.

Marine grade finish provides superior salt, humidity and UV protection. This coating withstands up to 3000 hours of continuous salt spray, comes with a 5-year warranty and is available in either a textured or gloss surface.

Modifications:
 Consult factory for custom or modified designs.

1	2	3	4	5
---	---	---	---	---

3 GLASS & GUARD*	
Up to 100w Options	
100GLCL	(Clear Glass)
100GLFR	(Frosted Glass)
100GLPR	(Prismatic Glass)
100GLCLGUP	(Clear Glass & Small Wire Guard)
100GLFRGUP	(Frosted Glass & Small Wire Guard)
100GLPRGUP	(Prismatic Glass & Small Wire Guard)
100GLCLGUPC	(Clear Glass & Cast Guard)
100GLFRGUPC	(Frosted Glass & Cast Guard)
100GLPRGUPC	(Prismatic Glass & Cast Guard)
100GLGUP	(Small Wire Guard with No Glass)
100GLGUPC	(Cast Guard with No Glass)
Up to 200w Options	
200GLCL	(Clear Glass)
200GLFR	(Frosted Glass)
200GLPR	(Prismatic Glass)
200GLCLGUP	(Clear Glass & Large Wire Guard)
200GLFRGUP	(Frosted Glass & Large Wire Guard)
200GLPRGUP	(Prismatic Glass & Large Wire Guard)
200GLCLGUPC	(Clear Glass & Large Cast Guard)
200GLFRGUPC	(Frosted Glass & Large Cast Guard)
200GLPRGUPC	(Prismatic Glass & Large Cast Guard)
200GLGUP	(Large Wire Guard with No Glass)
200GLGUPC	(Large Cast Guard with No Glass)

*Cast and Wire Guard Finish will match fixture finish.

WARRANTY
 See www.ANPlighting.com for complete fixture warranty.

4 ACCESSORIES*	
SBC	(Smooth Cast back plate Spun Alum Cover)*
PC	(Button Photo Cell) Remote Only
SC	(Scroll for Arms)*
SLC	(Sloped Ceiling Mount Canopy, 20° Max)*
SQ	(Square Back Plate)*
SWL	(Adjustable Locking Swivel)*
TBK	(Turn Buckle Kit)*

*Accessory finish will match fixture finish.

5 FINISHES					
*Marine Grade Finish has an additional charge					
Standard Colors	Standard Grade	Marine	Premium Colors	Premium Grade	Marine Grade*
Aspen Green	10	10M	High Gloss Black	01	01M
Cantaloupe	11	11M	Arctic Silver	14	14M
Lilac	12	12M	Candy Apple Red	64	64M
Putty	13	13M	Cobalt Blue	65	65M
Raw Unfinished	40	NA	Caramel	66	66M
Black	41	41M	Butterscotch	67	67M
Forest Green	42	42M	Black Silver	68	68M
Bright Red	43	43M	Gunmetal Gray	69	69M
White	44	44M	Mayan Gold	79	NA
Bright Blue	45	45M	Textured Desert Stone	80	80M
Sunny Yellow	46	46M	Extreme Chrome	81	81M
Aqua Green	47	47M	Graystone	82	82M
Galvanized	49	NA	Oil Rubbed Bronze	83	83M
Navy	50	50M	Carbon Graphite	96	96M
Architectural Bronze	51	51M			
Patina Verde	52	52M			
Copper Clay	53	53M			
Silver	56	56M			
Black Verde	61	61M			
Painted Chrome	70	70M			
Painted Copper	71	71M			
Textured Black	72	72M			
Matte Black	73	73M			
Textured Architectural	76	76M			
Textured White	77	77M			
Textured Silver	78	78M			

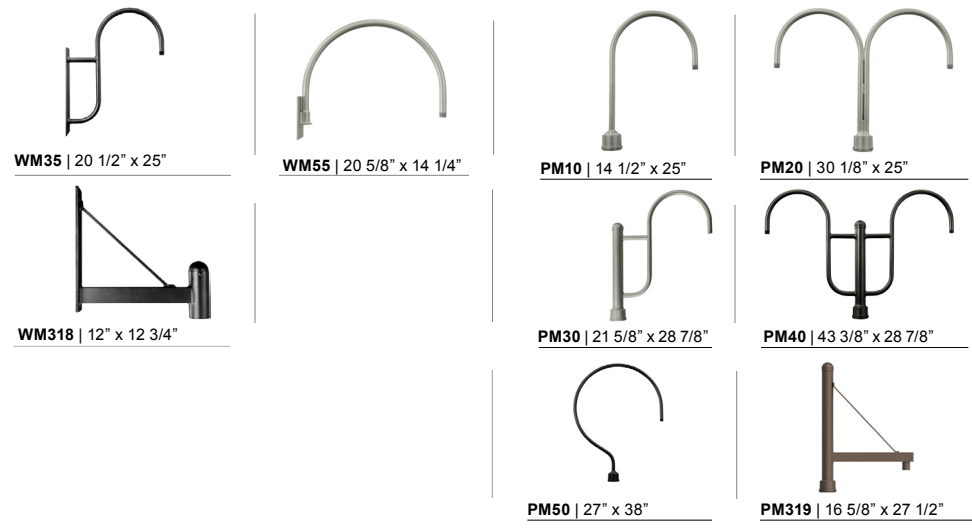
Consult Factory for additional paint charges and availability.

Project: _____
 Fixture Type: _____ Quantity: _____
 Customer: _____

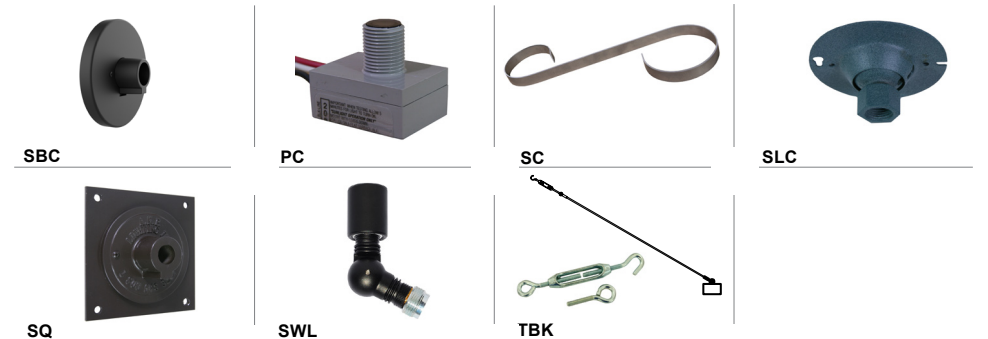
ARM MOUNTS | Dimensions are Projection x Height | CB included with all arms



WALL MOUNTS | Dimensions are Projection x Height | **POST MOUNTS** | Dimensions are Projection x Height



ACCESSORIES



GLASS & GUARDS
UP TO 200W MAX

Glass Legend: **CL** = Clear **FR** = Frosted **PR** = Prismatic
100 = Small **200** = Large

Glass Only	
	100 = 6 1/2" H X 4 1/8" W 200 = 9 1/4" H X 5" W 200GLCL 200GLFR 200GLPR
Glass with Cast Guard	
	100 = 7 1/2" H X 4 1/8" W 200 = 10 1/4" H X 5 1/2" W 200GLCLGUPC 200GLFRGUPC 200GLPRGUPC
Glass with Wire Guard	
	100 = 7 1/2" H X 4 1/8" W 200 = 10 1/4" H X 5" W 200GLCLGUP 200GLFRGUP 200GLPRGUP
GUPC Guard Only	
	100 = 7 1/2" H X 4 1/8" W 200 = 10 1/4" H X 5" W 200GLGUPC (Cast Guard)
GUP Guard Only	
	100 = 7 1/2" H X 4 1/8" W 200 = 10 1/4" H X 5" W 200GLGUP (Wire Guard)

Project: _____
 Fixture Type: _____ Quantity: _____
 Customer: _____

All fabric Color Cords are three conductor, 1/4" diameter

Solid Fabric Colored Cords



BLSF | Black



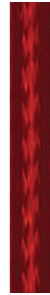
GYSF | Gray



CHSF | Chocolate Brown



WHSF | White



CASF | Cardinal



ORSF | Orange



LGSF | Lime Green



KGSF | Kelly Green



CBSF | Cobalt Blue



SBSF | Sky Blue

Patterned Fabric Colored Cords



BWHPF | Black/White Houndstooth



BIHPF | Houndstooth



GYCPF | Gray/Citrus Yellow



MOSPF | Magenta/Orange Stripe



NMTPF | Navy Mini Tweed

Glossy Fabric Colored Cords



GMGF | Gun Metal



SSGF | Sterling Silver



CPGF | Copper Penny



BRGF | Bronze



GOGF | Gold