

# EQ

*ANP* Lighting Collection



LFI INNOVATION AWARDS

**Category  
Winner**

*Parking, Roadway &  
Area Luminaires*



Pedestrian & Site Lighting



## Welcome to EQ

The EQ Collection by ANP Lighting establishes an exciting new equilibrium blending aesthetics, visual experience and technology.

Our design and engineering team uniquely balance form, function and scale with visual comfort, performance and technology to create an unparalleled site lighting collection.

EQ is distinctively versatile. The collection complements an impressive variety of architectural styles, settings, and scale. The EQ Collection delivers balance and unifies performance, proportion, and enhanced visual comfort throughout your site.







## EQ Post Top Luminaires

Function, meet form. Form, meet function.

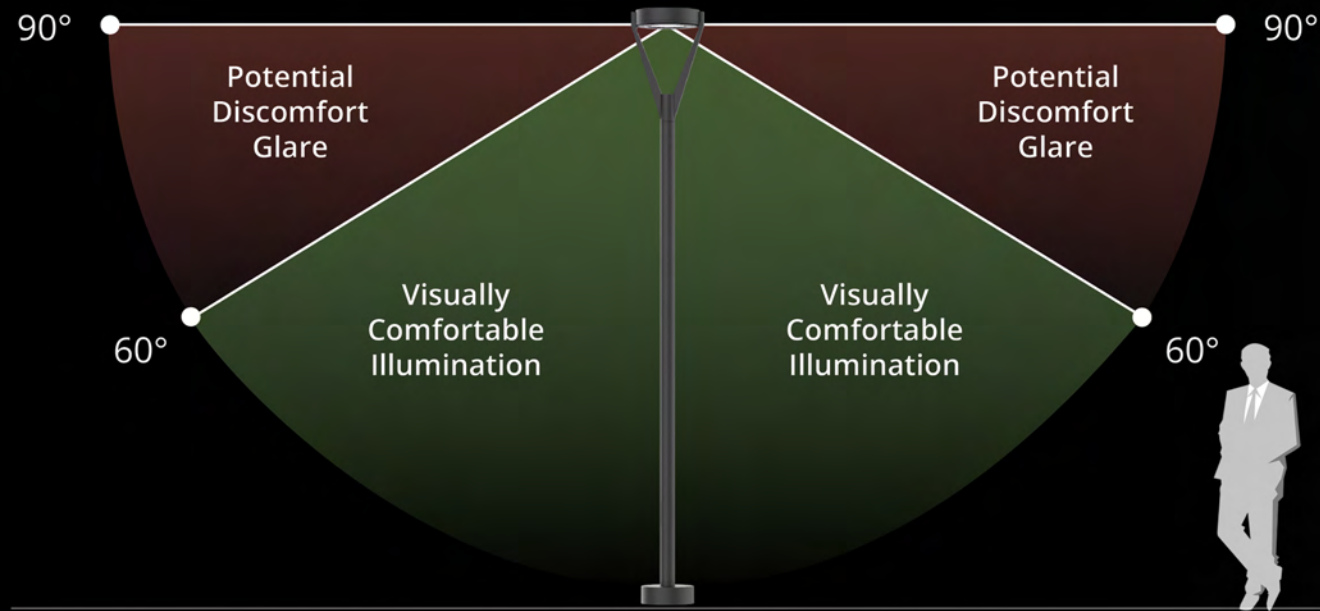
Unmatched in their versatility, EQ post top luminaires are offered in 3 distinct sizes and can be configured with a single or twin strut design to easily adapt to a variety of architectural settings.

- Comfort and performance are taken to the next level through ANP Lighting's latest LED Light Guide that delivers uniform illumination and superior optical control, while significantly reducing glare and eliminating pixelation of the LED source.
- The dayform appearance of the luminaire is further enhanced by the use of the LED Light Guide technology, providing a clean and minimalist appearance when the fixture is off.
- Type II, III, IV, and V distribution patterns in 2700K, 3000K, 3500K, and 4000K CCT.
- Luminaire is IP65, LED is IP66.
- Flush mount adapter allows for the luminaire to maintain a seamless transition to the pole, doing away with any exposed hardware or fasteners.
- Standard Surge Protection Device featuring 20KA maximum discharge current meets IEEE C62.41.2 Category C High and ANSI C136.2-2015 standards.
- Integral Quad Element Passive Infrared (PIR) motion sensor available. Designed to satisfy CA Title 24 requirements for bi-level dimming of lighting fixtures, utilizing 0-10V signal, the sensor is capable of dimming lighting loads down to 0%, 10%, 25%, or 50%.

# Seeing is Believing.

ANP Lighting's LED light guide technology is more than just a next generation LED system, but a fundamental approach that lighting will enhance the user experience. Fulfilling this experience is our advanced comfort optical system, engineered to deliver uniform illumination while significantly reducing discomfort caused by harsh glare.

Light exiting the luminaire at angles that typically cause visual discomfort is minimized, creating an environment suitable for almost any application.





# Unmatched Comfort & Performance.

ANP Lighting's EQ post-top luminaires strike a harmonious balance between visual comfort and performance. Utilizing the latest in LED Light Guide technology significantly reduces glare and eliminates pixelation of the LED source. Uniform illumination and superior optical control, along with a selection of Type II, III, IV, and V distribution patterns in 2700K, 3000K, 3500K and 4000K CCT, take comfort and performance to the next level.

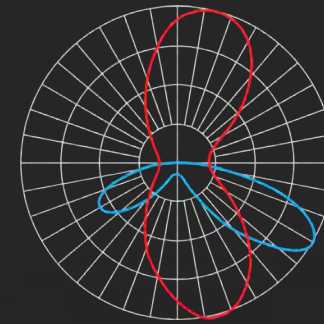
**IP66**  
LIGHT ENGINE  
CONSTRUCTION

**0**  
PIXELATION  
OF LED SOURCE

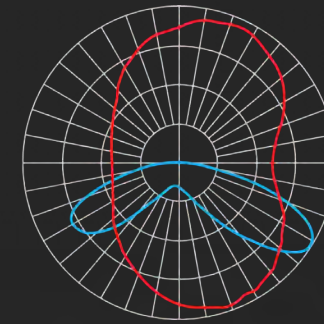
**20KA**  
SURGE PROTECTION  
STANDARD

**0-10V**  
DIMMING  
0-10V  
(DOWN TO 10%)

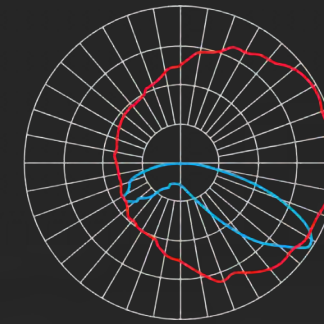
- Available distribution patterns Type II, III, IV and V
- 2700K, 3000K, 3500K, 4000K
- 3-Step Binning
- 80 CRI



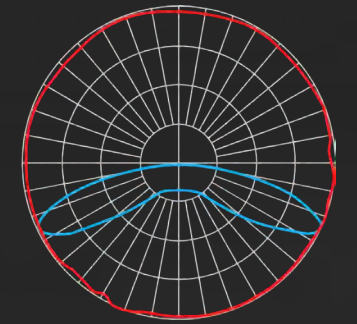
Type II



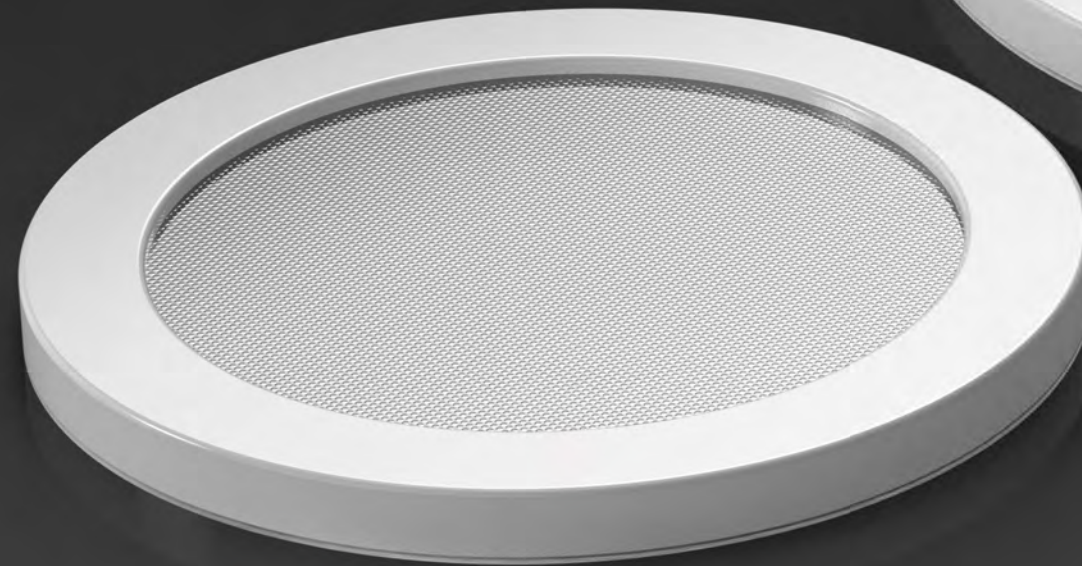
Type III



Type IV



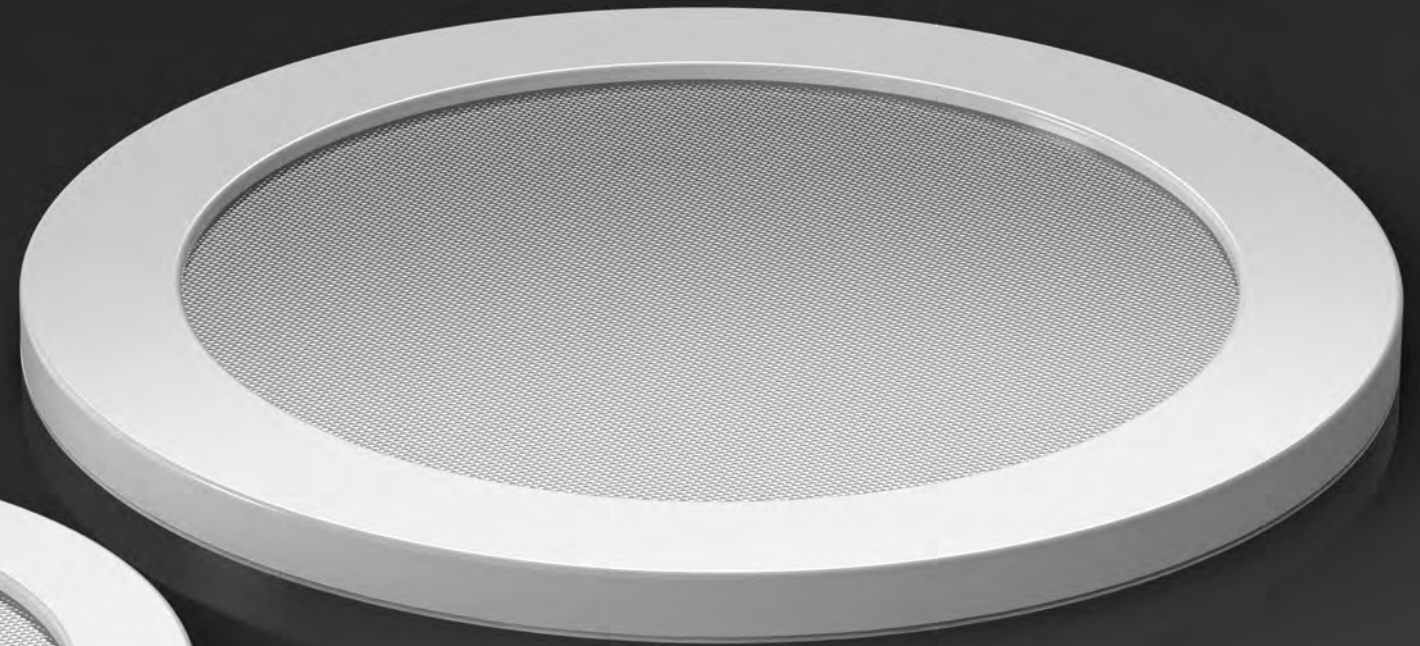
Type V



8.5"

30W | 39W | 50W

Up to 5,800 delivered lumens  
Up to 115 lumens per Watt



12.0"

70W | 80W | 90W | 105W

Up to 12,800 delivered lumens  
Up to 122 lumens per Watt







EQ111 WM122



EQ111 WM121

EQ111 WM122

## EQ Wall Mounts

Versatility in mounting.

Wall mount configurations with EQ luminaires maintain the same seamless and elegant transition, adding to the versatility of the EQ Collection.





EQ101

## EQ Cantenary Mount Luminaires

Even more versatility.

Catenary mounting allows the designer unparalleled flexibility to provide visually comfortable illumination to courtyards, plazas or streetscapes.

- Low profile design.
- Mounting hub compliments luminaire design.
- 30 degree tilt adjustment with locking mechanism.
- Accepts 1/4" diameter cable.
- Luminaire is IP65, LED is IP66.
- Liquid-tight cable fitting accepts 5-conductor cable with dimming leads.





## EQ Bollard

Keeping it in the family. Up high and down low!

Carrying on the EQ design language, the EQ bollard is the ideal companion product and offers a robust set of features.

- Type I, II, III, and V optical distribution patterns.
- 2700K, 3000K, 3500K, 4000K CCT and Amber (590nm) LEDs.
- Standard Surge Protection Device featuring 20KA maximum discharge current meets IEEE C62.41.2 Category C High and ANSI C136.2-2015 standards.
- Available internal high-low microwave motion sensor.

BL0121





LC0121  
6" - Smooth Column



LC0122  
6" - 4" Reverse Tapered Column



LC0123  
6" - 4" Transition Column

## EQ Light Columns

Another dimension.

The EQ light columns provide wider spacing than bollards. Standalone or used in conjunction with bollards to illuminate pathways, courtyards and plazas.

- Column choices are 6-inch smooth, 6 to 4-inch reverse tapered or 6 to 4-inch transition.
- Conical drop, white acrylic lens.
- Flat, diffuse lens is optional.
- Type V distribution.
- Available in 8 through 14-foot standard heights.



# LED Array

ANP Lighting's LED Array and the LED COB scale down the size, but not the performance.

## 10W

Up to 970 delivered lumens  
Up to 997 lumens per Watt

## 18W

Up to 1,855 delivered lumens  
Up to 103 lumens per Watt

## 28W

Up to 2,835 delivered lumens  
Up to 101 lumens per Watt

- Available distribution patterns Type I, II, III, and V
- 2700K, 3000K, 3500K and 4000K
- Available Amber LED (590nm dominant)
- 3-Step binning
- 90 CRI
- Available in bollard and light column with flat lens.

**IP66**

LIGHT ENGINE  
CONSTRUCTION

**20KA**

SURGE PROTECTION  
STANDARD

**3X**

DIMMING  
0-10V/TRIAC/ELV  
(DOWN TO 10%)



Dimensions: 4-1/4" diameter



Available in a 590nm True Amber solution that will meet most fish and wildlife specifications. Efficacy is in the 37 lm/W range, and all of our IES distributions are available.

# LED COB

## 10W

Up to 955 delivered lumens  
Up to 96 lumens per Watt

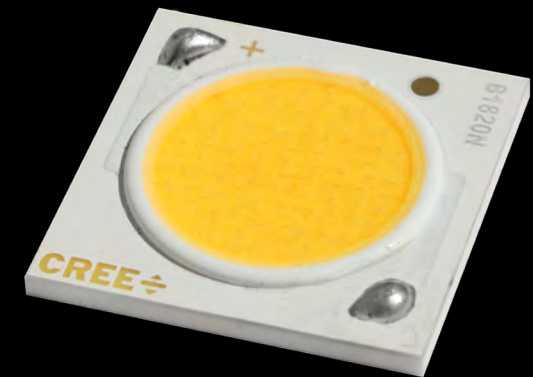
## 18W

Up to 1,720 delivered lumens  
Up to 96 lumens per Watt

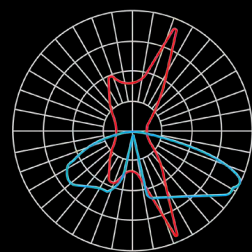
## 28W

Up to 2,717 delivered lumens  
Up to 96 lumens per Watt

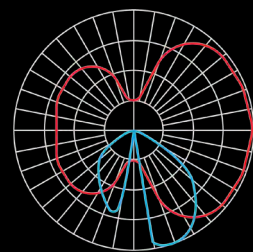
- Available distribution patterns Type V
- 2700K, 3000K, 3500K and 4000K
- 2-Step binning (3000K, 3500K, 4000K)
- 3-Step binning (2700K)
- 90 CRI
- Available in light column with conical lens



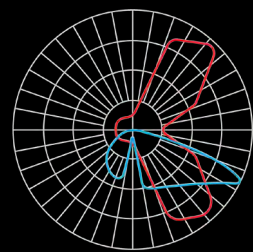
Dimensions: 11/16" Square



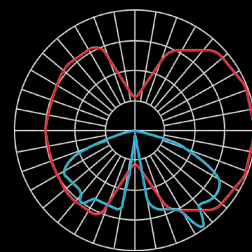
Type I



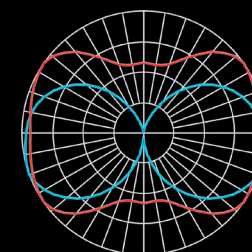
Type II



Type III



Type V



Type V





## Design Freedom

Industry leading in scale and versatility.

Truly unmatched in its versatility, the EQ Collection provides a complete site and area solution. Offered in 3 post top luminaire sizes that can be configured with a single or twin strut design, a matching companion bollard and complementary wall mounts, the EQ Collection will certainly provide the right fit.





# Control Solutions



## Fixture Mount High-Low Motion Sensor/Photocell

This sensor uses Quad Element Passive Infrared (PIR) motion-detecting technology. Suitable for mounting heights up to 40' with a 360° detection diameter of 80'. Satisfies CA Title 24 requirements for bi-level dimming of lighting fixtures. Utilizing a 0-10V signal, the sensor is capable of dimming lighting loads down to 50%, 25%, 10%, or OFF.



## Internal High-Low Motion Sensor

Typically used in bollards, this remote-microwave sensor is invisible to the viewer. Utilizing a 0-10V signal, the sensor is capable of dimming lighting loads down to 50%, 25%, 10%, or OFF. Sensitivity and other settings are configurable.



## External Mount High-Low Motion Sensor/Photocell

This line-voltage, outdoor-rated sensor utilizes 100% digital passive infrared (PIR) technology and mounts directly to a pole, post arm, or wall mount.



## Third-Party Controls Ready

ANSI C136.41 receptacle for traditional dusk-till-dawn photocontrol sensor. Available 5-pin receptacle to support 0-10V dimming, 7 pin for other 3rd party photo-controllers.





Since 1985, ANP Lighting has been inspiring and empowering innovative lighting solutions.

Today, ANP Lighting is a leading manufacturer of energy efficient architectural lighting solutions for corporate/office, municipal, education, sports and entertainment, hospitality, and retail applications. We expertly configure and manufacture interior, exterior, site, pedestrian, and roadway lighting that aligns with aesthetic vision and beautifully illuminates design details.

Our extensive line of lighting products and collections is complemented by a wide array of mounting, size, and color options – one of the largest selections in the industry. Our in-house lighting experts can help architects, designers, and specifiers develop lighting solutions with the high quality, craftsmanship, and value only products made in the U.S.A. can deliver.

-  [anplightinginc](#)
-  [anplighting](#)
-  [anp-lighting](#)
-  [anplighting](#)
-  [anplighting](#)

## Finishes

Visit [ANPlighting.com/resources/color-finishes](http://ANPlighting.com/resources/color-finishes) for more details. Custom finishes available.



Marine grade finishes are available. Colors shown may differ slightly from painted color.



Made in U.S.A. | A Family-Owned Business Since 1985



800-548-3227 | 909-982-1807

9044 Del Mar Avenue, Montclair, CA 91763

October 2024