

Shade & Light Source

SHADE SIZE	
MA08	8" Shade
MA10	10" Shade
MA12	12" Shade
MA14	14" Shade
WATTAGE	
GU24	Socket
M009LD	9-watt Cree® LED module 850 Lumens
M010LD	10-watt Cree LED module 1250 Lumens
M012LD	12-watt Cree LED module 750 Lumens; Integrated drive; Dimming only, narrow distribution only
M016LD	16-watt Cree LED module (12" shade and larger) 2000 Lumens
M024LD	24-watt Cree LED module (14" shade only) 3000 Lumens
200w	Incandescent (All sizes)
DIMMING	
D	Dimming (9, 10, 12-watt is TRIAC, 120v only, 16, 24-watt is 0-10v)
N	No Dimming
S	Sunset Dimming (27K only for CCT)
DISTRIBUTION	
N	Narrow
W	Wide
COLOR TEMPERATURE (CCT)	
27K	2700K
30K	3000K
35K	3500K
40K	4000K
LENS	
CL08	Clear 8" lens for 8" shade only
CL10	Clear 10" lens for 10" shade only
CL12	Clear 12" lens for 12" shade only
CL14	Clear 14" lens for 14" shade only
WH08	White 8" lens for 8" shade only
WH10	White 10" lens for 10" shade only
WH12	White 12" lens for 12" shade only
WH14	White 14" lens for 14" shade only
NL	No lens
SHADE FINISH	
Visit anplighting.com/products/color-finishes	

Mounting

WALL MOUNTS & PENDANTS	
8" Shade size	
E3110	90° arm
E3310	Gooseneck arm
E3510	Straight arm
WM905	Arch wall mount
2ST	1/2" Stem mount (Includes STC canopy only)
3ST	3/4" Stem mount (Includes STC canopy only)
WHC	8' White cord and canopy
BLC	8' Black cord and canopy
10" Shade size	
E3112	90° arm
E3312	Gooseneck arm
E3512	Straight arm
WM906	Arch wall mount
2ST	1/2" Stem mount (Includes STC canopy only)
3ST	3/4" Stem mount (Includes STC canopy only)
WHC	8' White cord and canopy
BLC	8' Black cord and canopy
12" Shade size	
E3114	90° arm
E3314	Gooseneck arm
E3514	Straight arm
WM907	Arch wall mount
2ST	1/2" Stem mount (Includes STC canopy only)
3ST	3/4" Stem mount (Includes STC canopy only)
WHC	8' White cord and canopy
BLC	8' Black cord and canopy
14" Shade size	
E3116	90° arm
E3316	Gooseneck arm
E3516	Straight arm
WM908	Arch wall mount
2ST	1/2" Stem mount (Includes STC canopy only)
3ST	3/4" Stem mount (Includes STC canopy only)
WHC	8' White cord and canopy
BLC	8' Black cord and canopy
TRIM FINISH	
Visit anplighting.com/products/color-finishes	

Product Number Sample

SHADE	WATTAGE	DIMMING	DISTRIBUTION	COLOR TEMP	MOUNTING	LENS	SHADE FINISH	TRIM FINISH*
MA14	M024LD	N	W	40K	E3116	CL14	44	41

*Includes bottom trim, cap, canopy, hardware & mount, unless specified differently.



Call or visit: 800.548.3227 | ANPlighting.com

Endless possibilities.

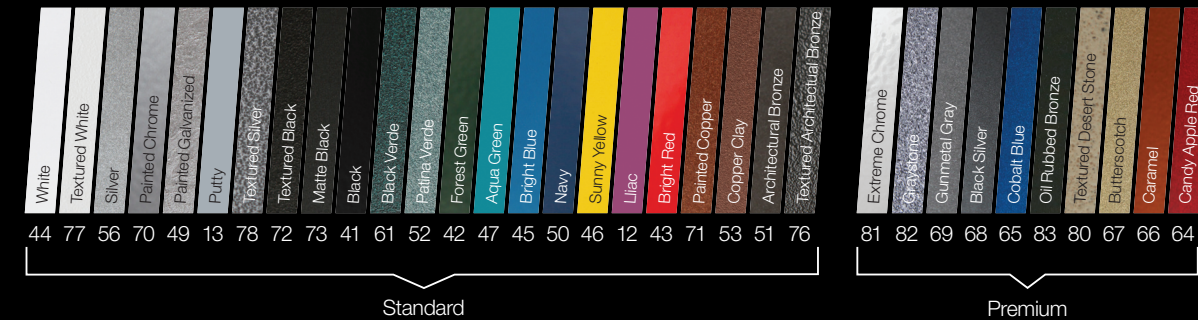
The Madison series is available in a wide array of sizes, mountings, arms, and finishes so you can create the exact mood to complement your design. Proudly made in the U.S.A., these high-quality, spun-aluminum shades are available in a wide range of contemporary and classic color finishes. So go ahead and mix it up ... the possibilities are endless.

1,000's of finish combinations



ANPlighting
INNOVATIVE SITE LIGHTING

Finishes – Visit anplighting.com/products/color-finishes for more details.



Marine Grade finish requires an additional charge, consult factory. Colors shown may differ slightly from painted color.



modernism with encompassing details

Madison



Contact Us: 800-548-3227 | 909-982-1807
9044 Del Mar Avenue, Montclair, CA 91763

ANPlighting.com

Madison

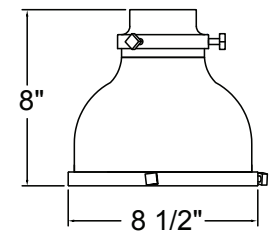
Synonymous with classic design, Madison's effortless elegance starts with a stunning shade profile paired with an industrial trim finish to add a sophisticated touch to restaurants, hotels, shops, and offices. Combine multiple sizes, mountings, arms, and finishes to create a unique and timeless look ... the possibilities are endless.



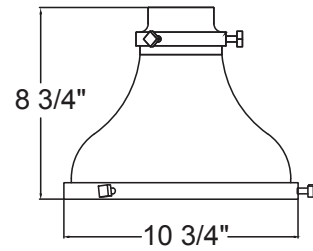
Madison shade sizes with mounting options

Pendants – 2 styles | Wall Mounts – 4 styles

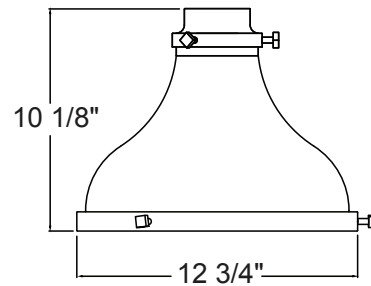
MA08-8" Shade



MA10-10" Shade



MA12-12" Shade



MA14-14" Shade

