

Weight: 2.0 lbs

**AU812**  
200w Max Incandescent  
12" Vintage Angle

Project: \_\_\_\_\_

Fixture Type: \_\_\_\_\_ Quantity: \_\_\_\_\_

Customer: \_\_\_\_\_



**Illuminating**  
ENGINEERING SOCIETY

**Specifications**

**Material:**  
Shade is 0.80" spun aluminum. Cast Aluminum Hub and Wall Canopy

**Electrical:**  
Medium Base Socket, 200w Max and 120v only.

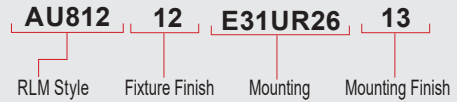
**Certifications:**  
Cord mounts are UL listed for dry locations. Arm mount are UL listed for wet locations.

**Finish:**  
A polyester powder coat high quality finish is electro-statically applied and baked at 430° for exceptional durability and color retention. Products undergo an intensive five-step cleansing and pretreatment process for maximum paint adhesion.

Marine grade finish provides superior salt, humidity and UV protection. This coating withstands up to 3000 hours of continuous salt spray, comes with a 5-year warranty and is available in either a textured or gloss surface.

**Modifications:**  
Consult factory for custom or modified designs.

**Catalog Logic**



**Catalog Number**

1

2

3

**AU812**

**FINISHES**

Standard Grade	Marine Grade	Standard Grade	Marine Grade
40	NA	53	100
41	101	56	109
42	102	61	106
43	114	70	118
44	107	71	105
45	112	72	108
46	123	73	125
47	120	76	121
49	NA	77	127
50	111	78	124
51	103	10	130
52	104	11	131
12	133	13	132
81	129	64	116
80	117	65	122
67	119	82	128
66	115	69	113
68	126	83	134

Consult factory for additional paint charges and availability

**WARRANTY**

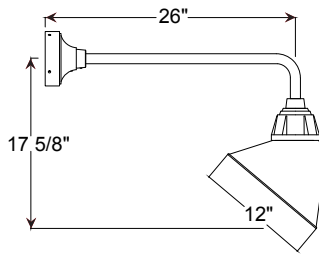
See [www.ANPlighting.com](http://www.ANPlighting.com) for complete fixture warranty

**MOUNTING**

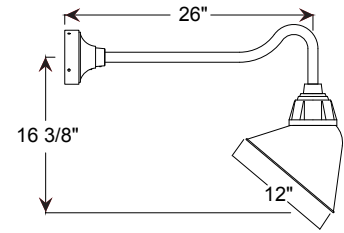
Arm Mounts

- E31UR26
- E33UR26
- E35UR26

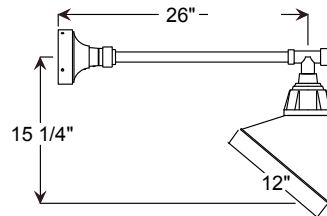
**ARM MOUNTS**



**AU812-E31UR26**



**AU812-E33UR26**



**AU812-E35UR26**