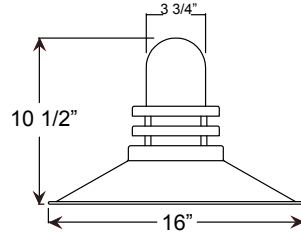


Project: _____

Fixture Type: _____ Quantity: _____

Customer: _____



Weight: 2.0 lbs

Specifications



Material:
RLM shades are constructed of heavy duty spun aluminum. Wall back plate and ballast housing are cast aluminum. All fasteners are stainless steel. Inside of shade is reflective white finish for all colors except galvanized paint finish. Screw hardware may not match paint.

Finish:
A polyester powder coat high quality finish is electro-statically applied and baked at 430° for exceptional durability and color retention. Products undergo an intensive five-step cleansing and pretreatment process for maximum paint adhesion.

Glass:
Choice of clear, frosted or prismatic glass.

Marine grade finish provides superior salt, humidity and UV protection. This coating withstands up to 3000 hours of continuous salt spray, comes with a 5-year warranty and is available in either a textured or gloss surface.

Electrical:
Medium Base Socket, 100w Maximum.

Certifications:
Cord mounts are UL Listed for dry locations. Arm mount, stem mount and wall mount are UL Listed for wet locations.

Modifications:
Consult factory for custom or modified luminaires.

ORB16 100w max Incandescent

Catalog Logic

ORB16 - **FR** - **WHC** - **GR16** - **41**

RLM Style Glass & Guards Mounting Source Accessories Finish

Catalog Number

ORB16 - **FR** - **WHC**

1 GLASS	
Up to 100w Options	
CL	(Clear Glass)
FR	(Frosted Glass)
PR	(Prismatic Glass)

2 Cord Mounts	
BLC	(6' black cord with 1" x 5 3/8" canopy)
WHC	(6' white cord with 1" x 5 3/8" canopy)
Stem Mounts	
1/2" (13/16" OD Rigid Stems with STC Flat Canopy)	
2ST6	2ST12 2ST18 2ST24 2ST36 2ST48
2ST60	2ST72 2ST96
3/4" (1" OD Rigid Stems with STC Flat Canopy)	
3ST6	3ST12 3ST18 3ST24 3ST36 3ST48
3ST60	3ST72 3ST96

4 FINISHES					
Standard Grade	Marine Grade		Standard Grade	Marine Grade	
40	NA	Raw Unfinished	53	100	Copper Clay
41	101	Black	56	109	Silver
42	102	Forest Green	61	106	Black Verde
43	114	Bright Red	70	118	Painted Chrome
44	107	White	71	105	Painted Copper
45	112	Bright Blue	72	108	Textured Black
46	123	Sunny Yellow	73	125	Matte Black
47	120	Aqua Green	76	121	Textured Architectural Bronze
49	NA	Galvanized	77	127	Textured White
50	111	Navy	78	124	Textured Silver
51	103	Architectural Bronze	10	130	Aspen Green
52	104	Patina Verde	11	131	Cantaloupe
12	133	Lilac	13	132	Putty
Premium Grade	Marine Grade		Premium Grade	Marine Grade	
81	129	Extreme Chrome	64	116	Candy Apple Red
80	117	Textured Desert Stone	65	122	Cobalt Blue
67	119	Butterscotch	82	128	Graystone
66	115	Caramel	69	113	Gunmetal Gray
68	126	Black Silver	83	134	Oil Rubbed Bronze

Consult factory for additional paint charges and availability

2 MOUNTING SOURCES	
Arm Mounts (Cast back plate included)	
E3	E4 E5 E6 E8 E9
E10	E11 E12 E13 E15
E18	E19 E25 E26
Wall Mounts	
WM10	
WM35	
WM40	
WM55	
WM75	
WM318	
Post Mounts	
PM10	
PM20	
PM30	
PM40	
PM50	
PM319	

3 ACCESSORIES	
CBC	(Cast back plate Spun Alum Cover)
GR16	(16" Wire Grill)
PC	(Button Photo Cell) Remote Only
SC	(Scroll for Arms)
SLC	(Sloped Ceiling Mount, 20° Max)
SQ	(Square Back Plate)
SWL	(Swivel)
TBK	(Turnbuckle Kit)

WARRANTY

See www.anplighting.com for complete fixture warranty.

Project: _____

Fixture Type: _____ Quantity: _____

Customer: _____

ARM MOUNTS | Dimensions are Projection x Height | CB included with all arms



GLASS & GUARDS

Glass Legend: **CL** = Clear **FR** = Frosted **PR** = Prismatic

Glass Only



WALL MOUNTS | Dimensions are Projection x Height | **POST MOUNTS** | Dimensions are Projection x Height



ACCESSORIES

